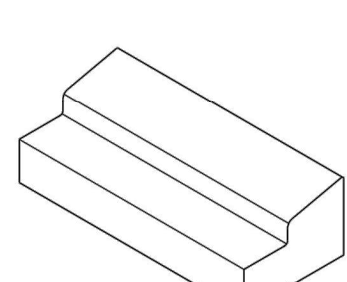


GENERAL NOTES:

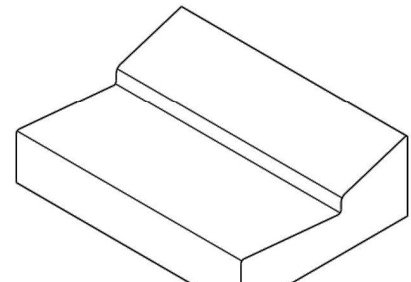
- For curb, gutter and curb & gutter provide 1/8" - 3/4" contraction joints at 10' centers (max.). Contraction joints adjacent to concrete pavement on tangents and flat curves are to match the pavement joints, with intermediate joints not to exceed 10' centers.
- Locate expansion joints for curb, gutter and curb & gutter in accordance with Specification 520.

TABLE OF CONTENTS:

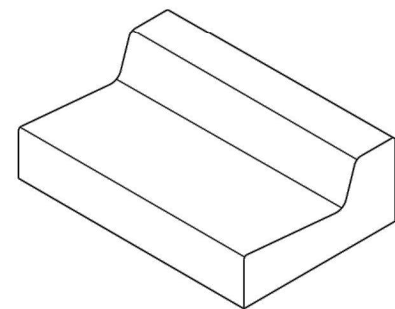
Sheet	Description
1	General Notes and Contents
2	Concrete Curb and Gutter
3	Curb and Gutter Joints and Endings, Concrete Bumper Guard, and Asphaltic Concrete Curb



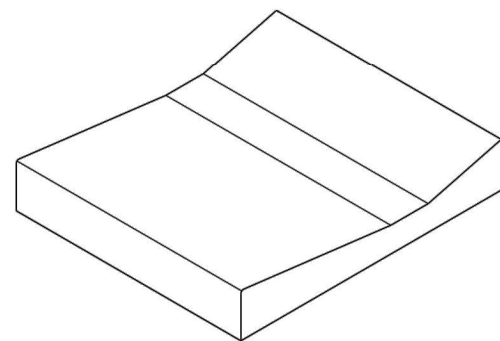
TYPE A



TYPE E

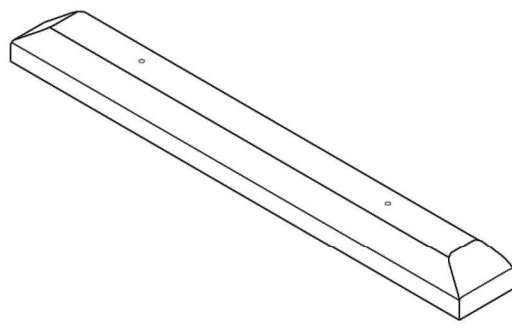


TYPE F



SHOULDER GUTTER

TYPE A, TYPE E, TYPE F, AND SHOULDER GUTTER  
(Other Types Similar)



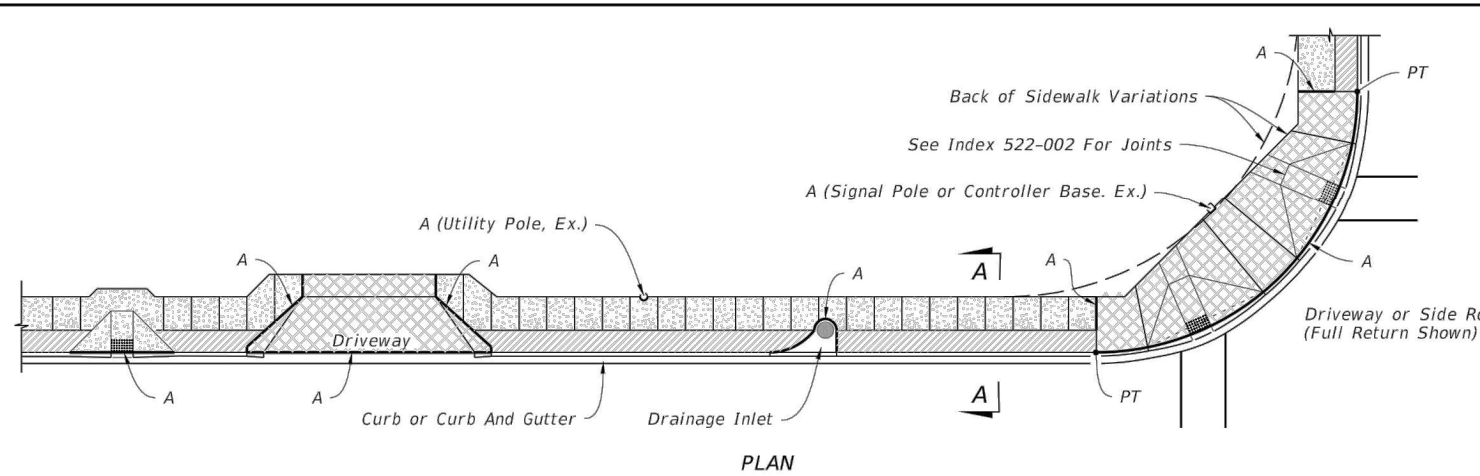
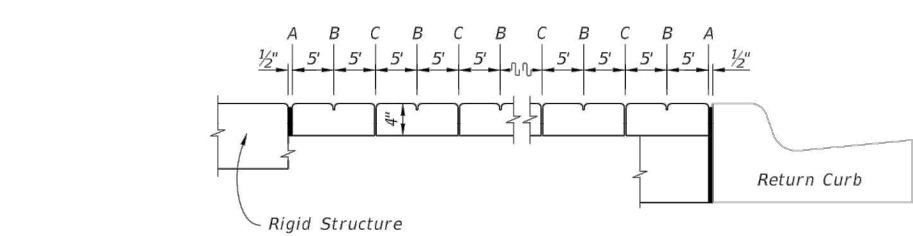
CONCRETE BUMPER GUARD

LAST REVISION	DESCRIPTION:	FY 2022-23	INDEX	SHEET
11/01/21		STANDARD PLANS	520-001	1 of 3

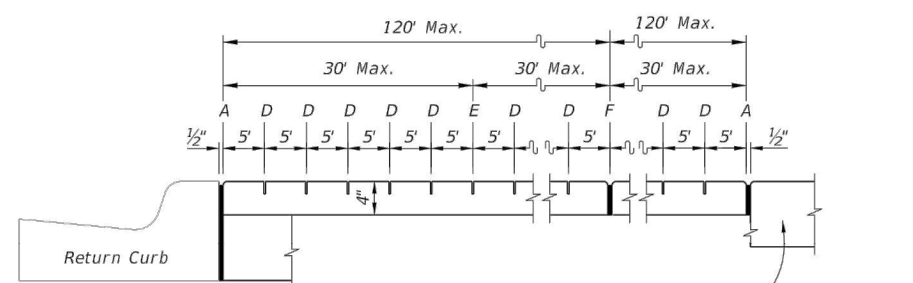
1 CURB AND GUTTER  
C5.0 NOT TO SCALE

GENERAL NOTES:

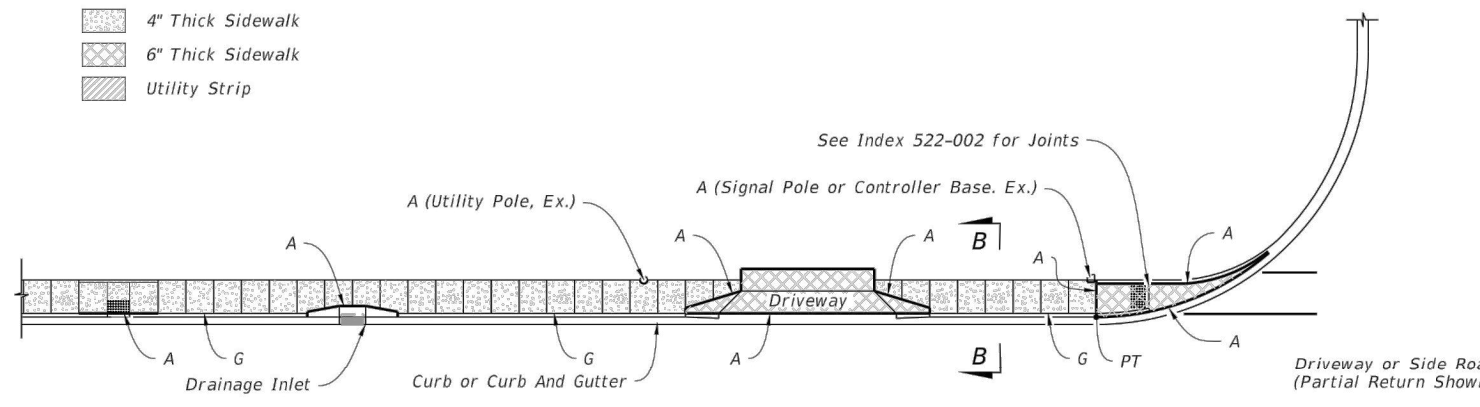
- Construct sidewalks in accordance with Specification 522. Use 6" concrete for Sidewalks and Curb Ramps Located within Curb Returns (See Plan View). Install all other concrete with thickness as shown, unless otherwise detailed in the Plans.
- Include detectable warnings on sidewalk curb ramps in accordance with Index 522-002.
- For Driveways see Index 522-003.
- Bond breaker material can be any impermeable coated or sheet membrane or preformed material having a thickness of not less than 6 mils and not more than 1/2".
- Construct sidewalks with Edge Beam through the limits of any surface mounted Pedestrian/Bicycle Railing or Pipe Guardrail shown in the plans. (See RAILING DETAIL)



LEGEND:  
4" Thick Sidewalk  
6" Thick Sidewalk  
Utility Strip

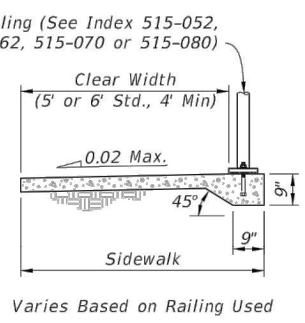


LONGITUDINAL SECTION



SECTION A-A

SECTION B-B

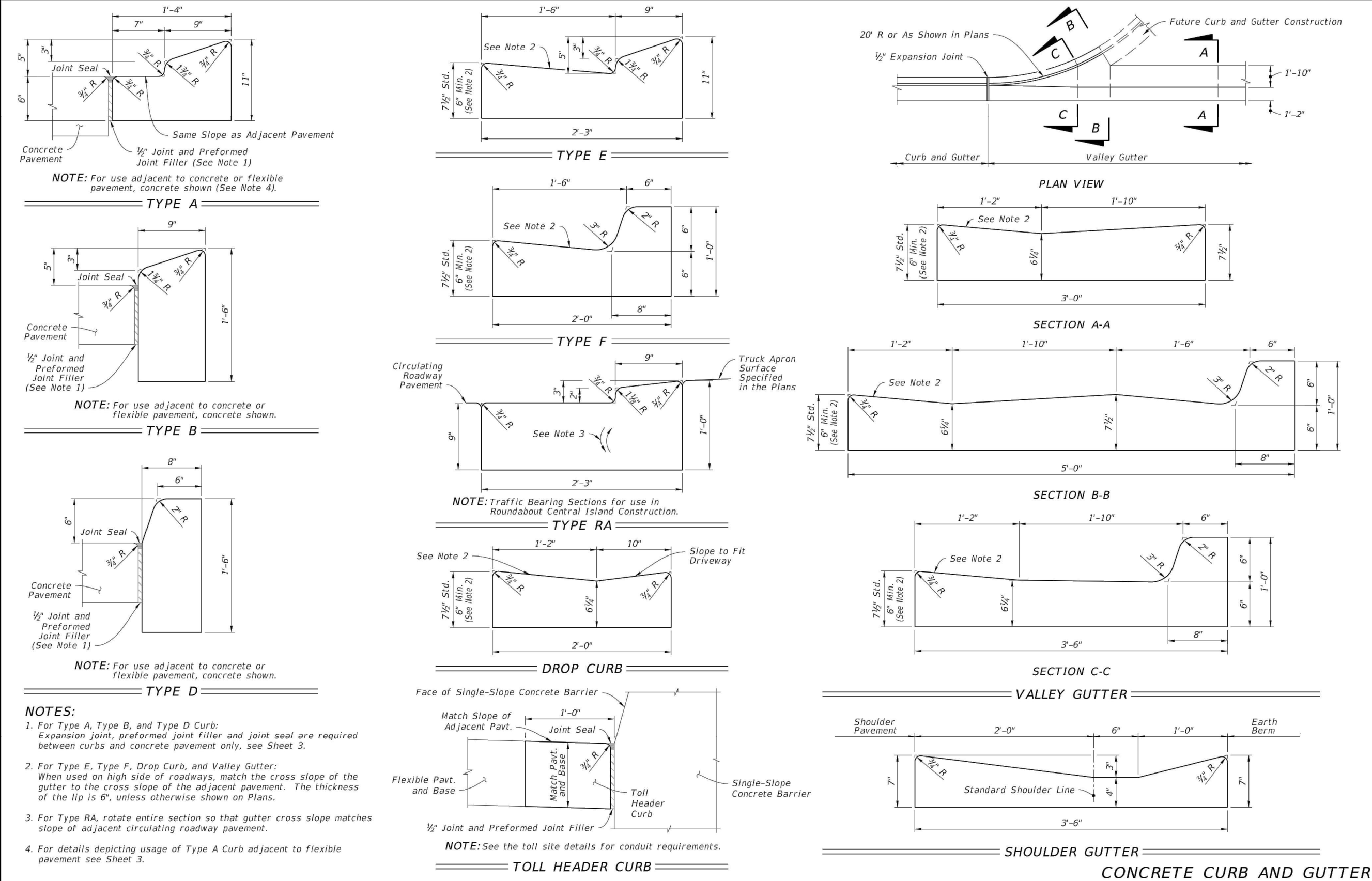


RAILING DETAIL

GENERAL NOTES AND CONCRETE SIDEWALK ON CURBED ROADWAYS

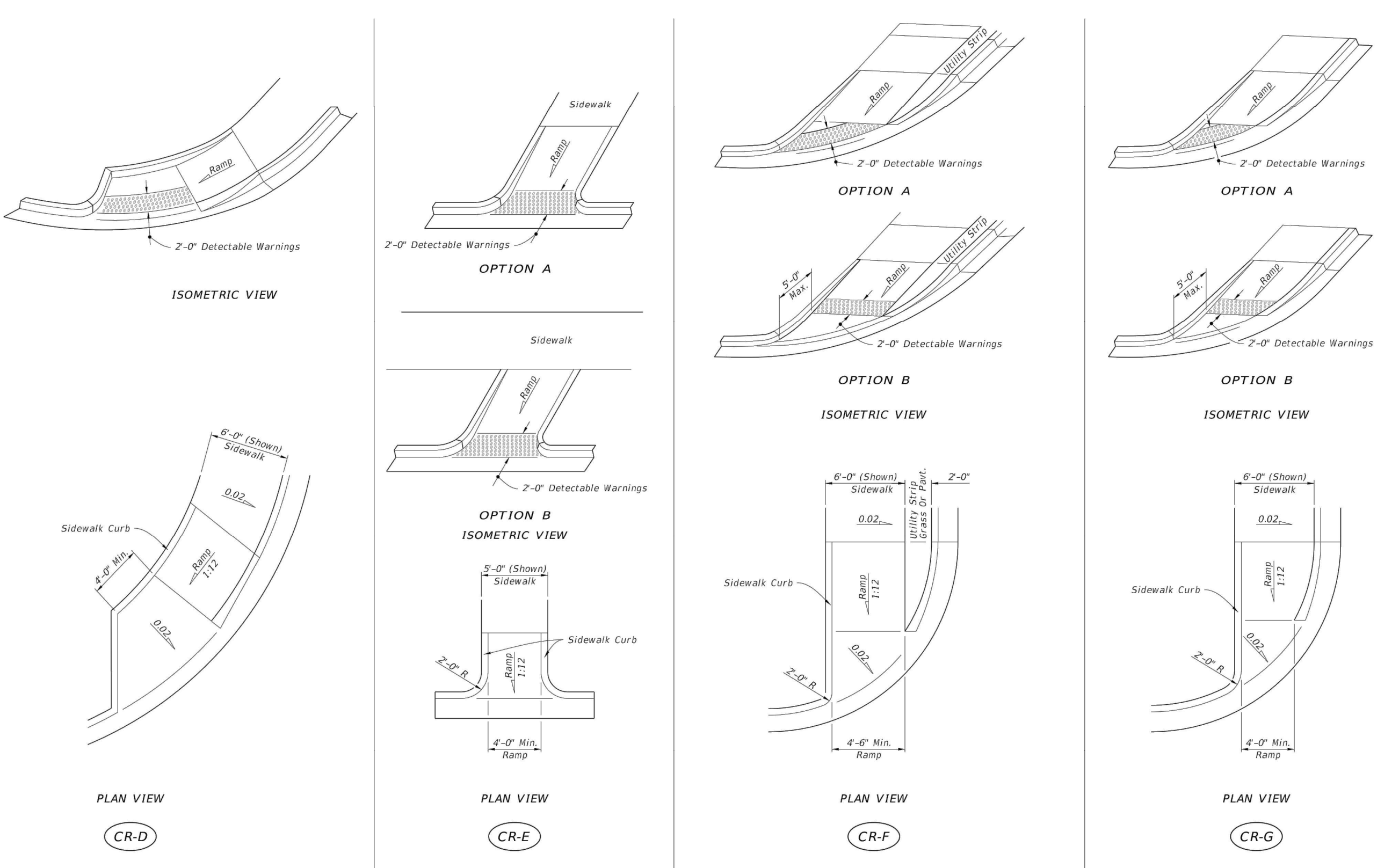
LAST REVISION	DESCRIPTION:	FY 2022-23	INDEX	SHEET
11/01/21		STANDARD PLANS	522-001	1 of 2

3 CONCRETE SIDEWALK  
C5.0 NOT TO SCALE



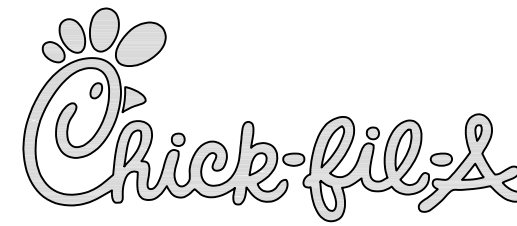
LAST REVISION	DESCRIPTION:	FY 2022-23	INDEX	SHEET
11/01/21		STANDARD PLANS	520-001	2 of 3

2 CURB AND GUTTER  
C5.0 NOT TO SCALE



LAST REVISION	DESCRIPTION:	FY 2022-23	INDEX	SHEET
11/01/21		STANDARD PLANS	522-002	4 of 7

4 SIDEWALK CURB AND RAMPS  
C5.0 NOT TO SCALE



5200 Buffington Rd.  
Atlanta Georgia,  
30349-2998

**Bowman**

Certificate of Authorization License No. 30462  
610 SE 7th St, Suite 300  
Fort Lauderdale, FL 33316  
Phone: (954) 314-6461  
www.bowman.com  
© 2021 Bowman Consulting Group Ltd

Seal

This item has been  
digitally signed and  
sealed by Andres  
Mizrahi, P.E.  
on the date  
adjacent to this  
seal

Printed copies  
of this document  
are not considered  
signed and sealed  
and the signature  
must be verified on any  
electronic copy  
2023.05.30 13:54:12-0400'  
ANDRES MIZRAHI, P.E.  
FLORIDA REG. NO. 92421  
(FOR THE FIRM)

**CHICK-FIL-A**  
**POMPANO BEACH**  
**2250 NORTH FEDERAL HIGHWAY**  
**POMPANO BEACH, FL 33062**

**FSU# 2483**

REVISION SCHEDULE	DESCRIPTION
NO. DATE	
1 3/9/22	PAVEMENT (T & SIDEWALK) SPECS
2 7/19/22	REVISED INLET RIM EL.
3 9/21/22	REVISED MENU ISLAND & STRIPING
4 10/6/22	REVISED ORDER CANOPY
5 10/26/22	EXFILTRATION TRENCH
6 12/08/22	ADA RAMP GRADING
7 12/13/22	PARKING ISLAND GRADING
8 12/13/22	SIDEWALK REVISION

CURRENT DESIGN	2021-005
NOTE APPLIED	
PROJECT #	010014-01-138
PRINTED FOR	PERMIT
DATE	5/24/2023
DRAWN BY	ST

FOR PERMIT  
SHEET NO. 1 OF 7  
SHEET NO. 2 OF 7  
SHEET NO. 3 OF 7  
SHEET NO. 4 OF 7  
SHEET NO. 5 OF 7  
SHEET NO. 6 OF 7  
SHEET NO. 7 OF 7

PZ23-12000022  
07/19/2023